

ROSAWAY

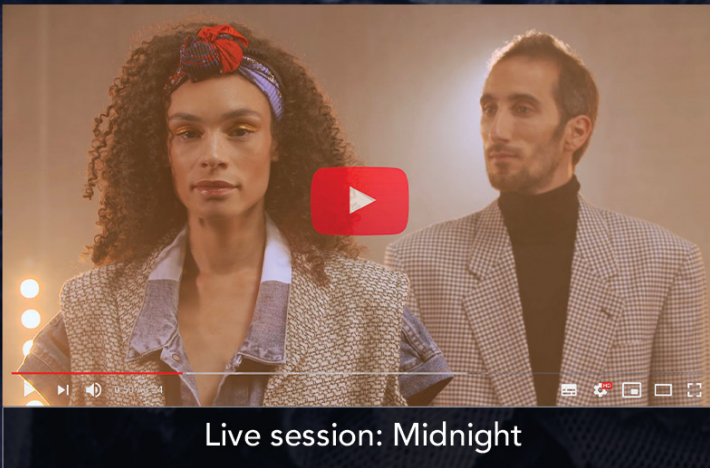
Pop - Jazz duo
from PARIS, FRANCE



Rolling Stone "The care given to image and sound shows an artistic maturity, a taste for innovation associated with an innate sense of melody and arrangements,"

Flute, drums, guitar and keys – that's ROSAWAY: a 70s Soul-Pop band hailing from Paris. Distinctly French, somewhat theme-tune-style, and a whole lot of groovy, this four-piece is a blend of past and present.

UP TO CONSIDERATION FOR GRAMMY® AWARDS 2022



JAN 14	NEW YORK CITY, NY	🇺🇸	APAP NYC
JAN 25	LOS ANGELES, CA	🇺🇸	SOFAR SOUNDS
JAN 26	LOS ANGELES	🇺🇸	THE HOTEL CAFE
FEB 13	SAN FRANCISCO	🇺🇸	SOFAR SOUNDS
FEB 14	PETALUMA, CA	🇺🇸	THE BIG EASY
FEB 16	SAN DIEGO, CA	🇺🇸	SOFAR SOUNDS
FEB 17	LOS ANGELES, CA	🇺🇸	SOFAR SOUNDS
FEB 18	VENICE, CA	🇺🇸	GREENLEAF
APRIL 4	LOS ANGELES, CA	🇺🇸	THE HOTEL CAFE
APRIL 6	LOS ANGELES, CA	🇺🇸	SOFAR SOUNDS
APRIL 13	ANAHEIM, CA	🇺🇸	NAMM SHOW 
APRIL 21	GUYANCOURT	🇫🇷	LA BATTERIE
APRIL 22	SAINT-AMAND <small>MONTROND</small>	🇫🇷	FEST MONTE LE SON
APRIL 29	NEW ORLEANS, LA	🇺🇸	HI HO LOUNGE
MAY 3	METAIRIE, LA	🇺🇸	JEFFERSON <small>P. ARTS CENTER</small>
MAY 4	MEMPHIS, TN	🇺🇸	CROSTOWN ART
MAY 6	ATHENS, AL	🇺🇸	THE LOFT
MAY 16	ASBURY, NJ	🇺🇸	THE STONE PONY
JUNE 6	ANGERS	🇫🇷	CHABADA
JUNE 21	SAUMUR	🇫🇷	FÊTE DE LA MUSIQUE

Founding members Rachel Ombredane and Stéphane Avellaneda have some serious weight behind them.

Rachel Ombredane

(Lead vocal / Flute) :

Rachel studied classical flute and music at the Sorbonne, has toured internationally with a traditional Celtic dance company, performed intimate flute and harp chamber concerts and sung vocals for artists such as Ed Sheeran.

Stef Avellaneda

(Drums + machines) :

Stef is an internationally renowned blues drummer who's played with and for the likes of Ben Poole and Ana Popovic. He was nominated as a Top 5 Blues Drummer by the Drummies 2015.